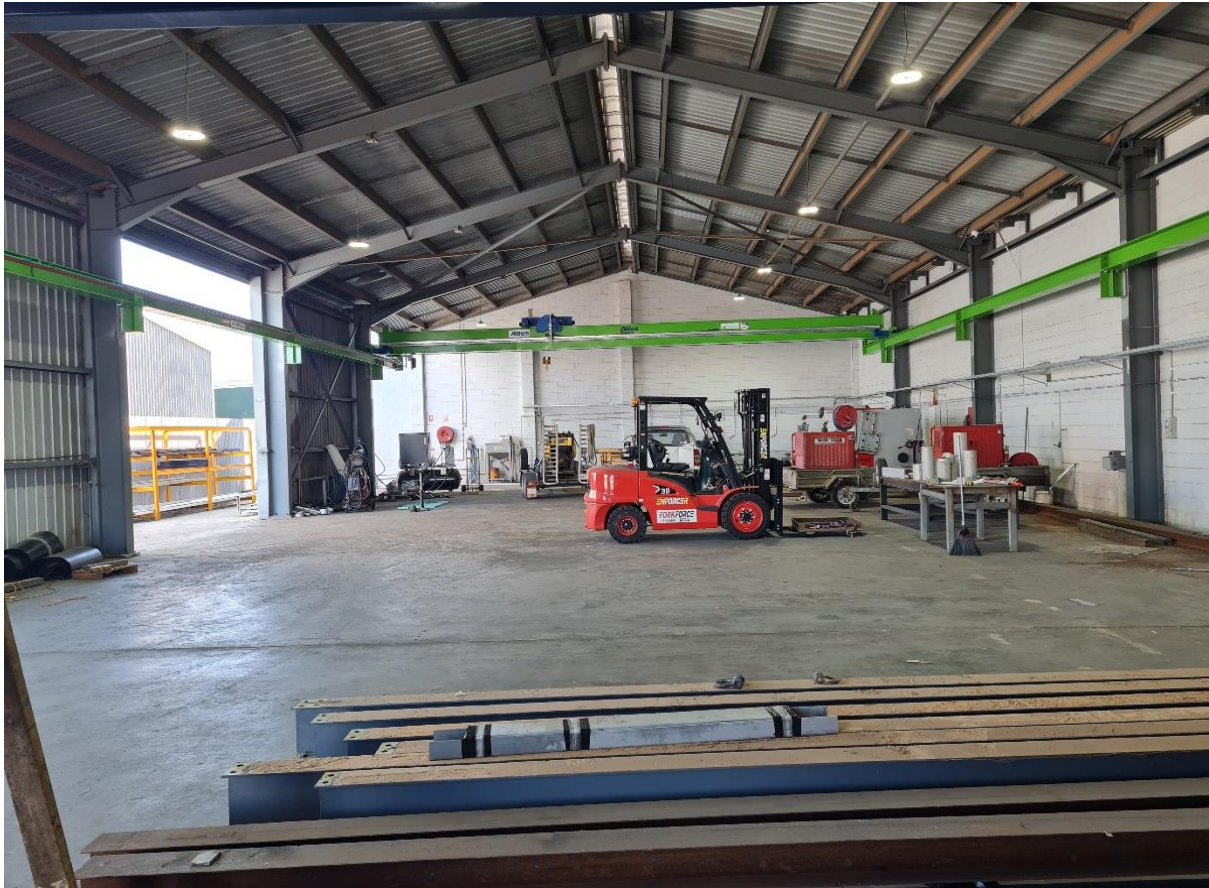




ENGINEERING CONSULTANTS AND CONTRACTORS



1. About Us

RDL Engineering is a locally owned company providing engineering, drafting, fabrication, fitting, machining, blast and painting, onsite installation, maintenance, scheduled services & breakdown support to the resource sectors.

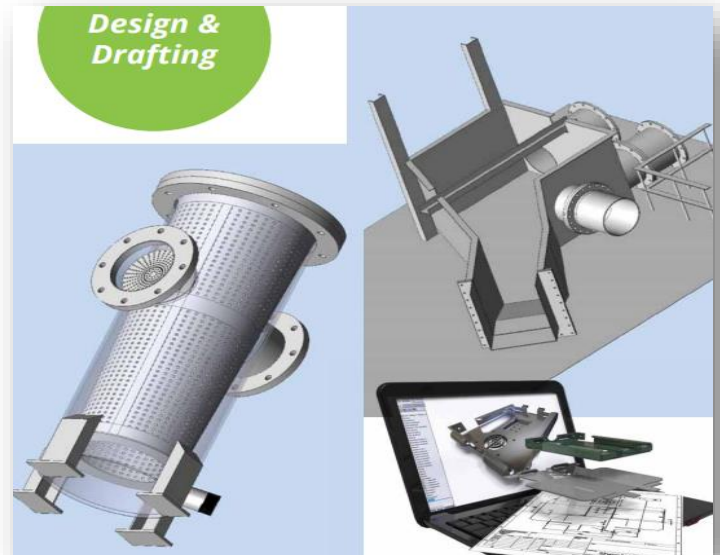
The company was established in 2024 as RDL Engineering Pty Ltd in Garbutt. RDL Engineering is strategically located in this area to service their clients' needs. RDL strives to meet the needs of their clients who have a requirement for quality and timely engineering solutions. They have established to provide clients with safe and timely delivery of products and services to the quality levels required by their clients.

RDL Engineering continually strives to improve health and safety, environmental and quality performances and has Quality, Environmental Safety management systems in place. These were generated according to ISO 45001:2018/14001:2015/9001:2015.

2. Services

- Engineering design and drafting (RPEQ)

RDL Engineering is an established Engineering company providing engineering services to our Fabrication and Maintenance Division for a range of industries. RDL Engineering has RPEQ Engineers supported by a team of mechanical and structural engineers and drafters. RDL Mechanical Engineering team has extensive experience in the design, engineering and installation of a broad range of mechanical equipment and structures.



- Metal fabrication and pressure welding

RDL Engineering's core strategic capabilities are derived from our ability to provide a comprehensive fabrication, installation and welding service. We can deliver all project requirements in-house. This guarantees that we maintain project control, dealing with unforeseen complications efficiently and ensures that we deliver the project in accordance to scheduled timeframes.

Our welders hold appropriate welding tickets issued by registered training organisation in Australia. Therefore, on site pressure welding can be performed without any hussles.



- **Machining**

Few things are more important than achieving the correct dimensions and surface smoothness of high performing industrial parts and components. At RDL Engineering and our business partner, we utilise the high standard CNC machines and manufacturing software to guarantee accuracy and consistency. Ensuring our clients' parts have the best finish and fit every time. Our machine shop has the ability and flexibility to support our clients' needs.



- **Mechanical maintenance and shutdown**

RDL Engineering is one of the most reliable and respected industrial shutdown & maintenance service providers. Specialists in industrial shutdown works, we use 15 years of expertise and knowledge to minimise business' downtime. Our shutdown offerings include, but not limited to:

- Coordination & management
- Planning & scheduling
- Equipment repairs
- Safety & quality assurance
- Asset inspections, repairs & modifications
- Consulting
- Material logistics
- Process & procedure policy development

Our unique, quick response, highly trained teams are ready to mobilise at short notice, to where ever needed.

3. Past Projects

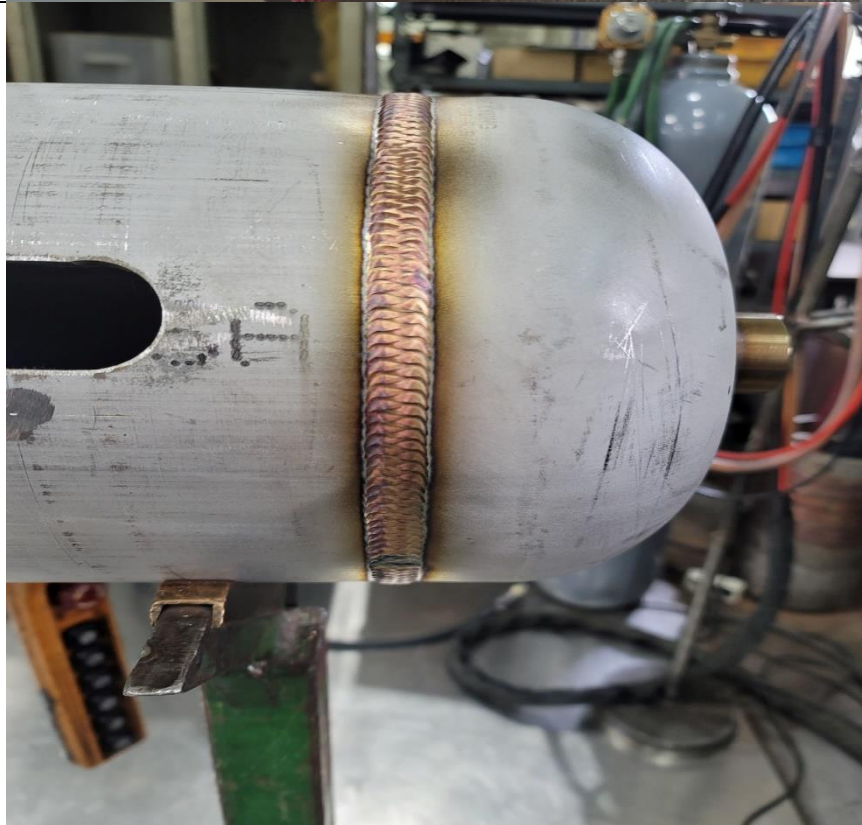
Structures but not limited to

- Heat exchanger (Fabricate & Install)
- Structural frame (Fabricate & Install)
- Tank (Fabricate & Install)



Pipework but not limited to

- TIG, Flux core
- Pressure Welding
- Pipe fitting







4. Management commitment to OHS

Occupational Health and Safety

At RDL engineering, the safety, health and well-being of our people and the communities in which we operate is our first and foremost consideration. We believe that everyone has the right to work in a safe workplace. It's more than a philosophy, it's a set of principles underpinned by systems of work that we call "Zero Harm"; which means working in an incident and injury free workplace.

The key indicators we use to check on our progress towards Zero Harm include monitoring:

- Conducting internal safety training
- Zero Harm Observations of our work activities
- Employee communication sessions and Toolbox Talks
- Workplace site inspections
- Employee and contractor drug and alcohol screenings
- Internal and external audit programs.

We will continue to identify and incorporate safety and health innovations and improvements at all levels within RDL. This commitment is backed by our senior leaders, our cultural change strategies and our fully documented, rigorous company-wide management systems.

The RDL safety management system has been created to meet the requirements of Australian Standard for occupational health and safety AS 4801, helping us to achieve a positive safety, health and environmental record.